

For further information contact:
Jennifer Preston (JPA&D)
jpreston@jpad.com.au
Nic Lottering (TVS partnership)
nic.l@tvspartnerhip.com.au
Kate Grainger (Vision Australia) :
kate.g@visionaustralia.org



MEDIA RELEASE(for immediate release)

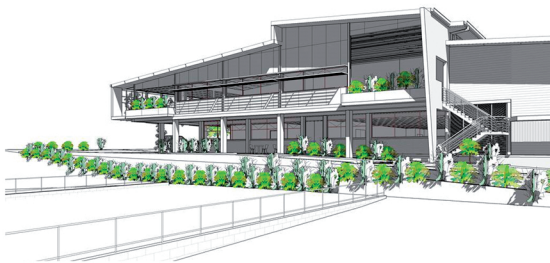
VISION AUSTRALIAN NEW 4 STAR FLAG SHIP HEADQUARTERS

Brisbane City Council have just awarded more than \$40,000 to Vision Australia, the new Australia wide training and client facilities for the blind and vision impaired. The award contribution is to encourage the use of environmental sustainable design features in their recently approved the development of Vision Australia new Brisbane



head office in Coorparoo, located on Old Cleaveland road, will be the flag ship of the new roll out and upgrades of Vision Australia facilities nationwide. Leading the way, by example the unique architecture will set a standard for environmental considerations in all projects. Aiming for a 4 star green rating Vision Australia's team of architects in association have provided a first class design answering social, environmental and very specific client needs and requirements.

It has been a very busy and exciting time for Vision Australia, with their public liason, Gerrad Gosens giving inspiring performances on channel 7's 'dancing with the stars.' Gerrad has complete faith that the new VA Coorparoo building will provide a community partnership of knowledge, skills and expertise to enrich the participation in life of people who are blind or have low vision and their families. With an alarming statistics that that more than 600,000 Australians will be blind or be vision impaired by 2010, the modern aesthetics of the new architecture will also "highlight that vision impairment, is not a disability that greatly impacts a persons life, now we can show that we are just as able as the majority of Australians"- Gerrad Gosens



The architects in association include, JPA&D and TVS partnership, have design a modern style aesthetics that boasts many environmental features. The large roof will harvest rain water and provide for systems such as landscape irrigation. The roof also consists of a photovoltaic array that will provide the site with majority of its electrical needs, limiting the need for council provided services. The buildings

thermal mass and night mass ventilation systems will significantly reduce heating and cooling loads throughout the year. The VA Coorparoo will cater for vision impaired staff and clients in offices and warehouse facilities. The architectural interior design details include, contrasting colours, use of natural lighting and flush floor junctions to provide a safe and comfortable working and learning space. The overall building is geared towards the ideals of a carbon neutral footprint and effective and functional internal spaces.

Overall the new Facility will start construction early 2010. With rumours that the prime minister, Kevin Rudd will be opening the facility on completion. The much anticipated high standard architecturally designed building is talking point of both the architectural community and future users.

-END-

ABOUT:

JPA&D is a Sydney based architecture and design practice focused on providing a high level of quality and service to our clients. We specialise in the areas of hospitality, retail, commercial office and specialist facility design. Creative and well thought through design is backed up by thorough documentation and clear client communication.

The TVS Partnership formed in 1990 by the merging of the companies, Prangley Crofts & Associates and Grahame Shelley & Associates. specialising in a range of disciplines encompassing the built/natural environments. Our expertise and experience includes Architecture, Interior Design, Ecological Building Design, Facilities Planning, Master Planning and Project Management. With offices in Brisbane and the Gold Coast, Australia, we have been involved in projects for both the public and private sectors